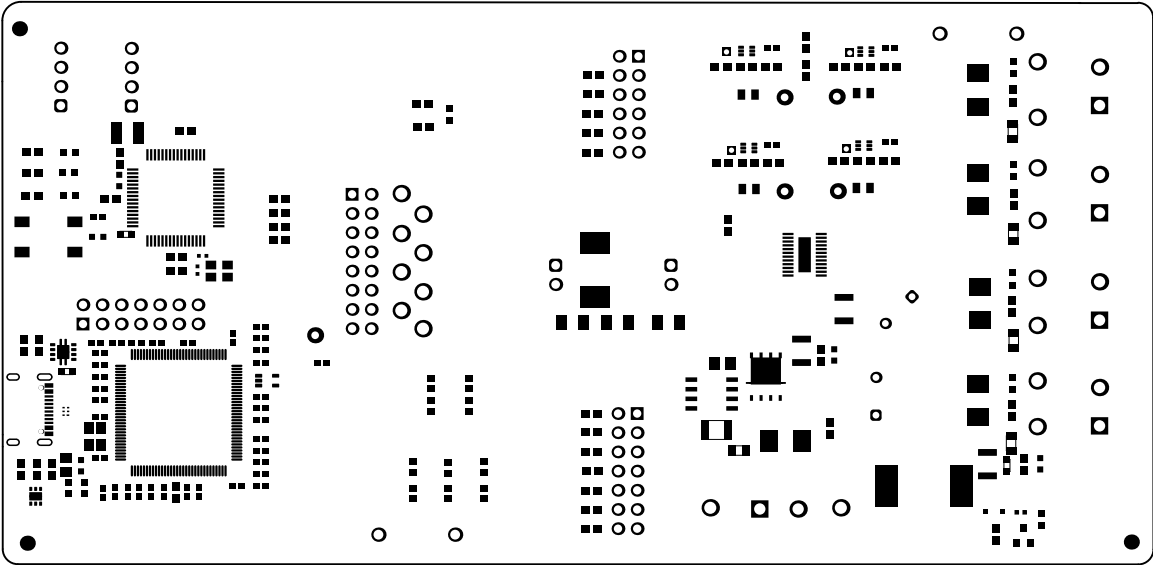
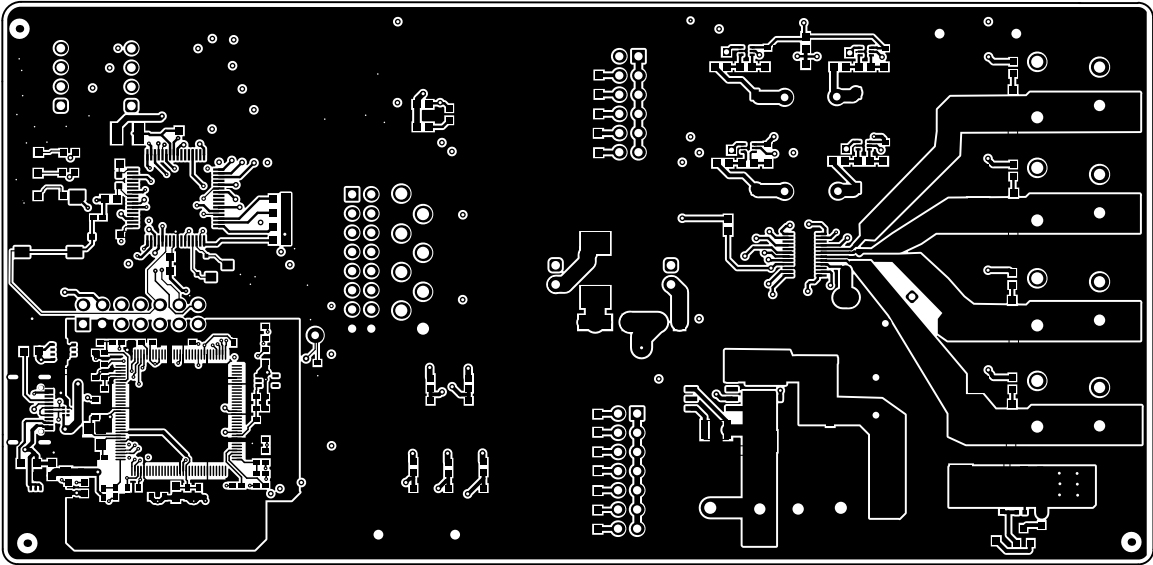


U1

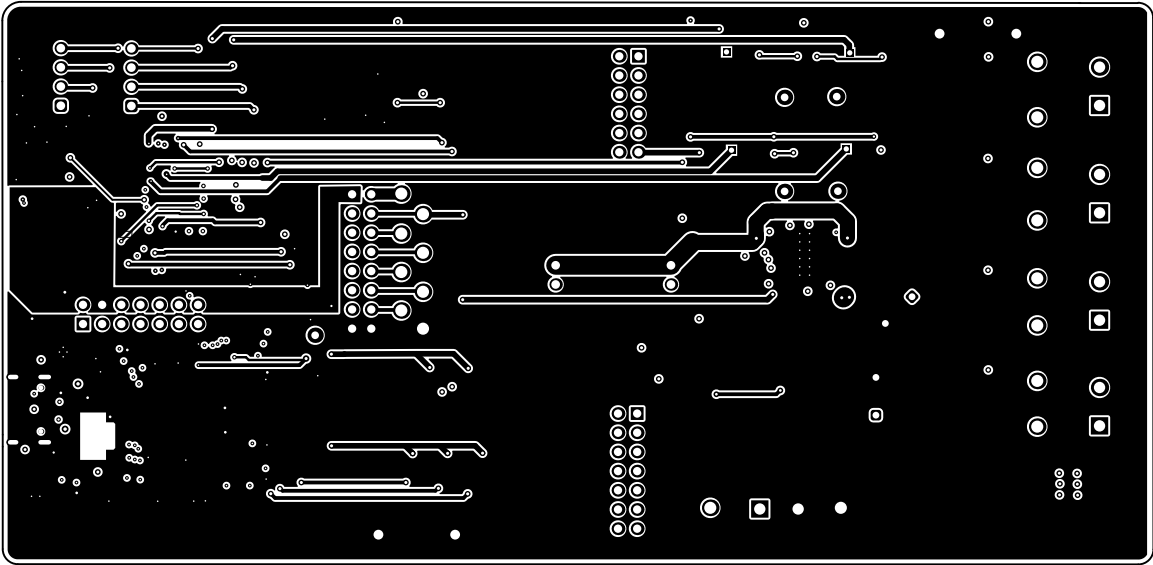
| | | | |
|----------------------------------|----------------------------------|-------------------|---------------------------------|
| ALL ARTWORK VIEWED FROM TOP SIDE | BOARD #: MD108-001 | REV: A | SUN REV: Not in version control |
| LAYER NAME = Top Overlay | TID #: N/A | | |
| PLOT NAME = Top Overlay | GENERATED : 9/12/2025 2:06:53 PM | TEXAS INSTRUMENTS | |



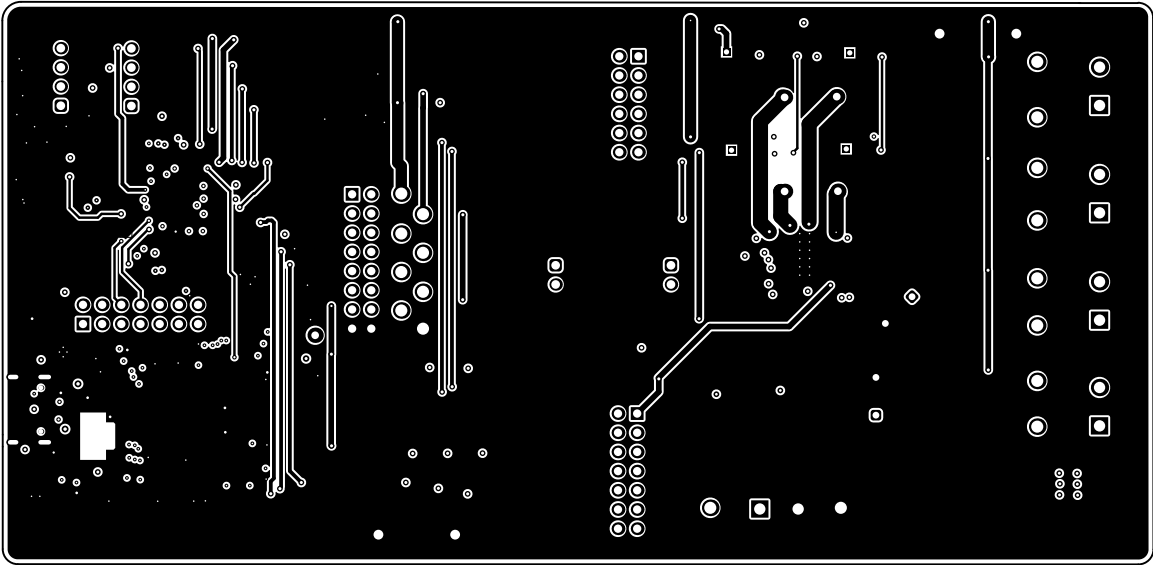
| | | | |
|----------------------------------|----------------------------------|--------|---------------------------------|
| ALL ARTWORK VIEWED FROM TOP SIDE | BOARD #: MD108-001 | REV: A | SUN REV: Not in version control |
| LAYER NAME = Top Solder | TID #: N/A | | |
| PLOT NAME = Top Solder Mask | GENERATED : 9/12/2025 2:06:53 PM | | TEXAS INSTRUMENTS |



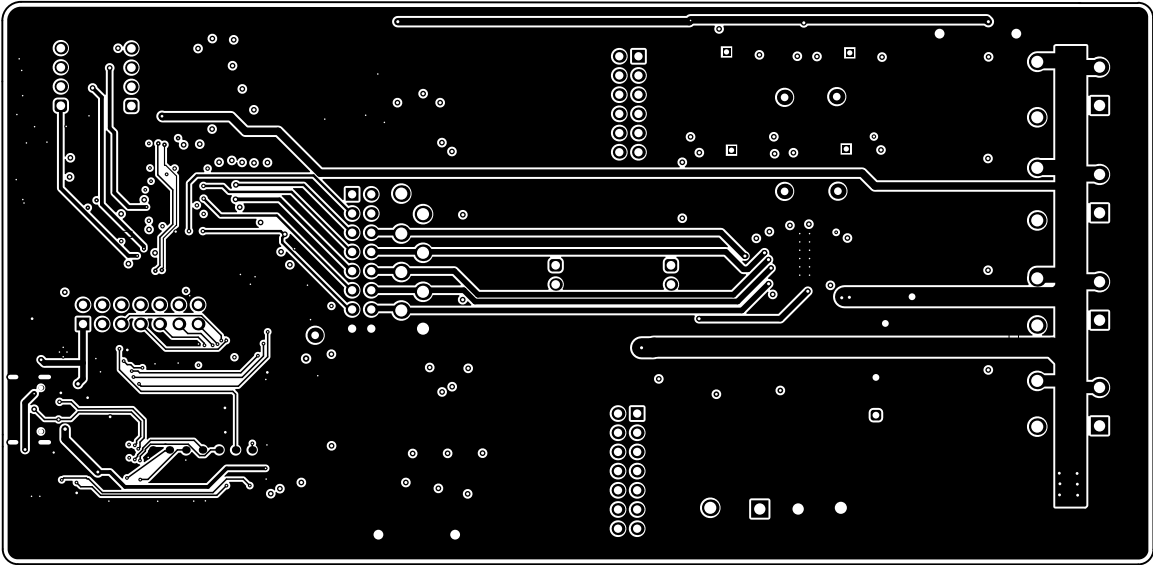
| | | | |
|----------------------------------|----------------------------------|--------|---------------------------------|
| ALL ARTWORK VIEWED FROM TOP SIDE | BOARD #: MD108-001 | REV: A | SUN REV: Not in version control |
| LAYER NAME = Top Layer | TID #: N/A | | |
| PLOT NAME = Top Layer | GENERATED : 9/12/2025 2:06:54 PM | | TEXAS INSTRUMENTS |



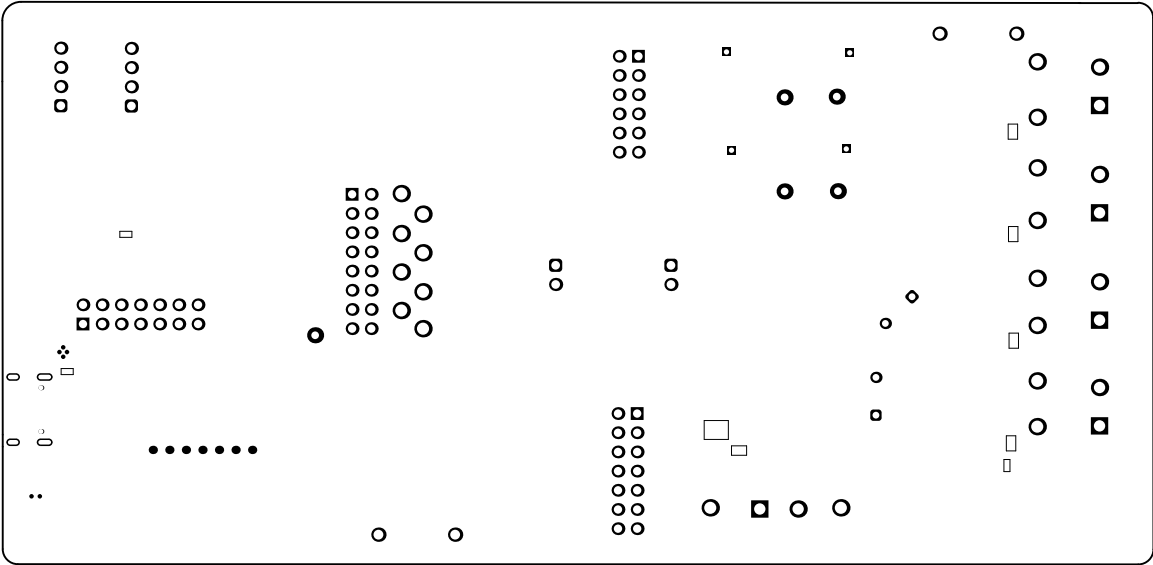
| | | | |
|----------------------------------|----------------------------------|-------------------|---------------------------------|
| ALL ARTWORK VIEWED FROM TOP SIDE | BOARD #: MD108-001 | REV: A | SUN REV: Not in version control |
| LAYER NAME = | TID #: N/A | | |
| PLOT NAME = Signal Layer 1 | GENERATED : 9/12/2025 2:06:54 PM | TEXAS INSTRUMENTS | |



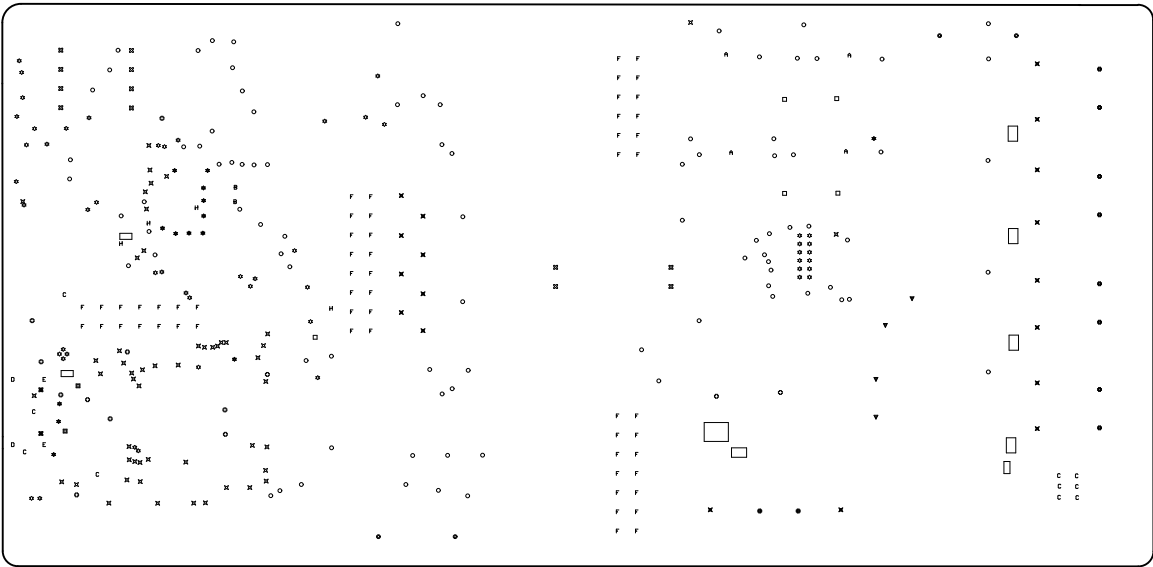
| | | | |
|----------------------------------|----------------------------------|--------|---------------------------------|
| ALL ARTWORK VIEWED FROM TOP SIDE | BOARD #: MD108-001 | REV: A | SUN REV: Not in version control |
| LAYER NAME = | TID #: N/A | | |
| PLOT NAME = Signal Layer 2 | GENERATED : 9/12/2025 2:06:54 PM | | TEXAS INSTRUMENTS |



| | | | |
|----------------------------------|----------------------------------|-------------------|---------------------------------|
| ALL ARTWORK VIEWED FROM TOP SIDE | BOARD #: MD108-001 | REV: A | SUN REV: Not in version control |
| LAYER NAME = Bottom Layer | TID #: N/A | | |
| PLOT NAME = Bottom Layer | GENERATED : 9/12/2025 2:06:54 PM | TEXAS INSTRUMENTS | |



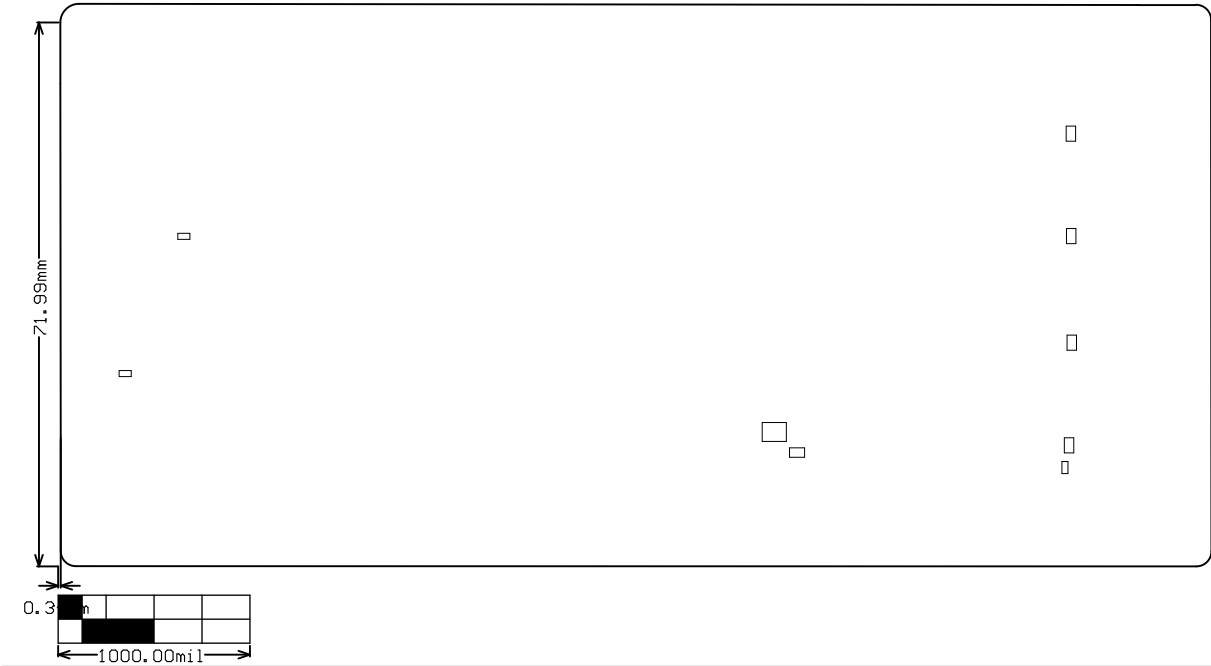
| | | | |
|----------------------------------|----------------------------------|--------|---------------------------------|
| ALL ARTWORK VIEWED FROM TOP SIDE | BOARD #: MD108-001 | REV: A | SUN REV: Not in version control |
| LAYER NAME = Bottom Solder | TID #: N/A | | |
| PLOT NAME = Bottom Solder Mask | GENERATED : 9/12/2025 2:06:54 PM | | TEXAS INSTRUMENTS |



| Symbol | Count | Hole Size | Plated | Hole Type | Drill Layer Pair | Hole Tolerance |
|--------|-----------|--------------------|--------|-----------|--------------------------|----------------|
| ⚙ | 52 | 0.200mm (7.87mil) | PTH | Round | Top Layer - Bottom Layer | |
| ⌘ | 52 | 0.203mm (8.00mil) | PTH | Round | Top Layer - Bottom Layer | |
| H | 4 | 0.300mm (11.81mil) | PTH | Round | Top Layer - Bottom Layer | |
| ⚙ | 14 | 0.305mm (12.00mil) | PTH | Round | Top Layer - Bottom Layer | |
| ⚙ | 13 | 0.356mm (14.00mil) | PTH | Round | Top Layer - Bottom Layer | |
| C | 10 | 0.381mm (15.00mil) | PTH | Round | Top Layer - Bottom Layer | |
| B | 2 | 0.400mm (15.75mil) | PTH | Round | Top Layer - Bottom Layer | |
| O | 90 | 0.406mm (16.00mil) | PTH | Round | Top Layer - Bottom Layer | |
| ⬛ | 2 | 0.465mm (18.29mil) | PTH | Round | Top Layer - Bottom Layer | |
| ⌘ | 2 | 0.650mm (25.59mil) | NPTH | Round | Top Layer - Bottom Layer | |
| A | 4 | 0.700mm (27.56mil) | PTH | Round | Top Layer - Bottom Layer | |
| ▼ | 4 | 0.900mm (35.43mil) | PTH | Round | Top Layer - Bottom Layer | |
| □ | 5 | 1.016mm (40.00mil) | PTH | Round | Top Layer - Bottom Layer | |
| F | 56 | 1.100mm (43.31mil) | PTH | Round | Top Layer - Bottom Layer | |
| ⌘ | 12 | 1.150mm (45.28mil) | PTH | Round | Top Layer - Bottom Layer | |
| ⬤ | 4 | 1.300mm (51.18mil) | PTH | Round | Top Layer - Bottom Layer | |
| D | 2 | 1.400mm (55.12mil) | PTH | Slot | Top Layer - Bottom Layer | |
| ⚙ | 10 | 1.500mm (59.06mil) | PTH | Round | Top Layer - Bottom Layer | |
| ⌘ | 18 | 1.600mm (63.00mil) | PTH | Round | Top Layer - Bottom Layer | |
| E | 2 | 1.700mm (66.93mil) | PTH | Slot | Top Layer - Bottom Layer | |
| | 358 Total | | | | | |

Slot definitions : Routed Path Length = Calculated from tool start centre position to tool end centre position.
Hole Length = Routed Path Length + Tool Size = Slot length as defined in the PCB layout

| | | | |
|----------------------------------|----------------------------------|-------------------|---------------------------------|
| ALL ARTWORK VIEWED FROM TOP SIDE | BOARD #: MD108-001 | REV: A | SUN REV: Not in version control |
| LAYER NAME = Drill Drawing | TID #: N/A | | |
| PLOT NAME = Drill Drawing | GENERATED : 9/12/2025 2:06:54 PM | TEXAS INSTRUMENTS | |



| | | | | | | |
|----------------------------------|-----------|-------------|------------|-------------------|----------|------------------------|
| ALL ARTWORK VIEWED FROM TOP SIDE | BOARD #: | MD108-001 | REV: | A | SUN REV: | Not in version control |
| LAYER NAME = M2 Board Dimensions | TID #: | N/A | | | | |
| PLOT NAME = Board Dimensions | GENERATED | : 9/12/2025 | 2:06:54 PM | TEXAS INSTRUMENTS | | |